

The image contains three technical drawings of a street lighting pole:

- Corte - AA:** A cross-section of the pole base. It shows a concrete foundation with a height of 2.00m. Below this, there is a section with a height of 1.00m. The drawing is labeled "CORTE - AA" at the bottom.
- Corte - BB:** A cross-section of the pole structure. It shows a vertical pole with a height of 2.00m. Below this, there is a section with a height of 1.00m. The drawing is labeled "CORTE - BB" at the bottom.
- Detail View:** A small drawing showing the connection between the pole and the foundation. It is labeled "A", "B", and "C" at the connection points.

Technical drawing of a meter cabinet (armário) showing front and side elevations with dimensions and labels.

Front Elevation (Left):

- Overall width: 640
- Width of the main body: 550
- Width of the door: 250
- Door height: 90
- Label: CAIXA DE MEDIÇÃO

Front Elevation (Right):

- Overall width: 2060
- Width of the main body: 1090
- Width of the door: 1039
- Door height: 60
- Label: DISJUNTOR
- Label: MEDIDOR
- Label: TC'S
- Label: VÁRIÁVEL
- Label: MURETA EM ALVENARIA

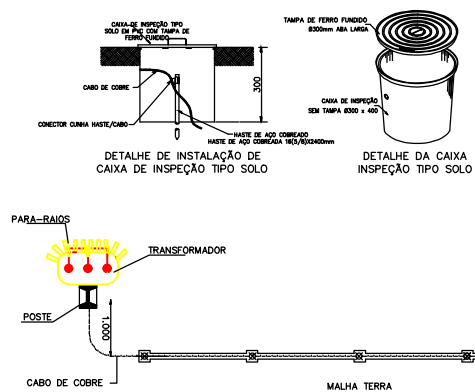
Side Elevation (Right):

- Overall height: 2090
- Height of the main body: 1000
- Height of the door: 45
- Label: ELETRODUTO
- Label: POSTE DUPLO T

Dimensions:

- Overall width: 640
- Width of the main body: 550
- Width of the door: 250
- Door height: 90
- Overall height: 2090
- Height of the main body: 1000
- Height of the door: 45
- Overall width (right): 2060
- Width of the main body (right): 1090
- Width of the door (right): 1039
- Door height (right): 60
- Label: DISJUNTOR
- Label: MEDIDOR
- Label: TC'S
- Label: VÁRIÁVEL
- Label: MURETA EM ALVENARIA
- Label: ELETRODUTO
- Label: POSTE DUPLO T

PAULO HENRIQUE MARQUES DE MOURA
ENGENHEIRO ELETRICISTA/SEDUC-PI
CREA RN 1919129820



OBS: A RESISTÊNCIA MÁXIMA PARA MALHA DE TERRA SERÁ DE 10Ω

[illegible]